



# Disney FROZEN II



**BRANDED**  
RETAIL SOLUTIONS





# Disney FROZEN II

## Sidekick - Bags

Sidekick/Endcap with 6 built-in hooks for costume bags.

Foil on front header. Attached to existing fixtures.

### Configuration:

The sidekick has 12 hooks of 11 cm. Wheels included.

### Assembly:

Flatpacked. Consists of one metal sheet that is folded on both sides. Graphic foil is replaceable for easy re-theming on the header.

### Dimensions Length-Width-Height, cm:

Full unit: L68 x W18 x H155  
Weight: Approx. 9 kg





# Disney FROZEN II

## Island Model - Bags

The island works as a costume destination in the store. Its size lets you display a large variety of different products.

### Configuration:

The Island comes with 12 hooks of 20 cm and 18 hooks of 30 cm. Wheels included.

### Assembly:

This display like all our displays is shipped flatpacked. There are 8 parts to this display. The header, base, two end pieces and the middle wall which is made up of 3 pieces for easy assembly. All parts are joined together with screws.

### Dimensions Length-Width-Height, cm:

Full unit: L70 x W137 x H180  
Weight: Approx. 72 kg





# Disney FROZEN II

## Island Model - Accessories



The island lets you display a large variety of different products from bags to accessories. The waterfall is ideal for showing off the premium costumes, that can then be hanging in larger quantities on the opposite side in various sizes. Next to it can be a selection of accessories or another 6 hooks of bagged product.

### Configuration:

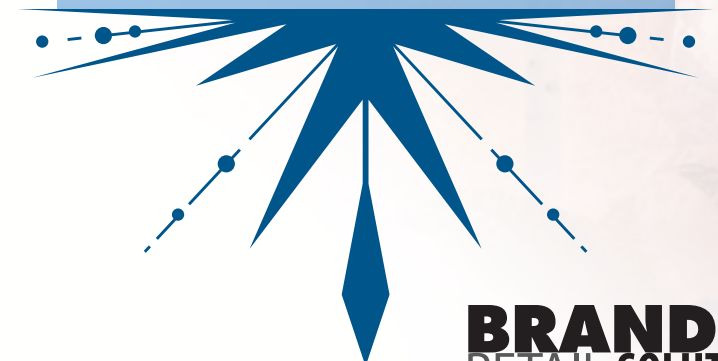
Pegboard on 3 sides. The top shelf includes rack for hangers. 24x20 cm hooks, waterfall and wheels included.

### Assembly:

There are 9 parts to this display. The header, base, two end pieces, the top shelf, the rail for the top shelf and the middle wall which is made up of 3 pieces. Assembled with screws.

### Dimensions Length-Width-Height, cm:

Full unit: L70 x W137 x H180  
Weight: Approx. 72 kg



**BRANDED**  
RETAIL SOLUTIONS





# Disney FROZEN II

## L Model - Bags

This Z model is made specifically for bags and includes 12 hooks of 20 cm.

### Configuration:

The side panels are bent in opposite directions. Header has foil on both front and back. Foil on sides panels. This model is not suited for accessories.

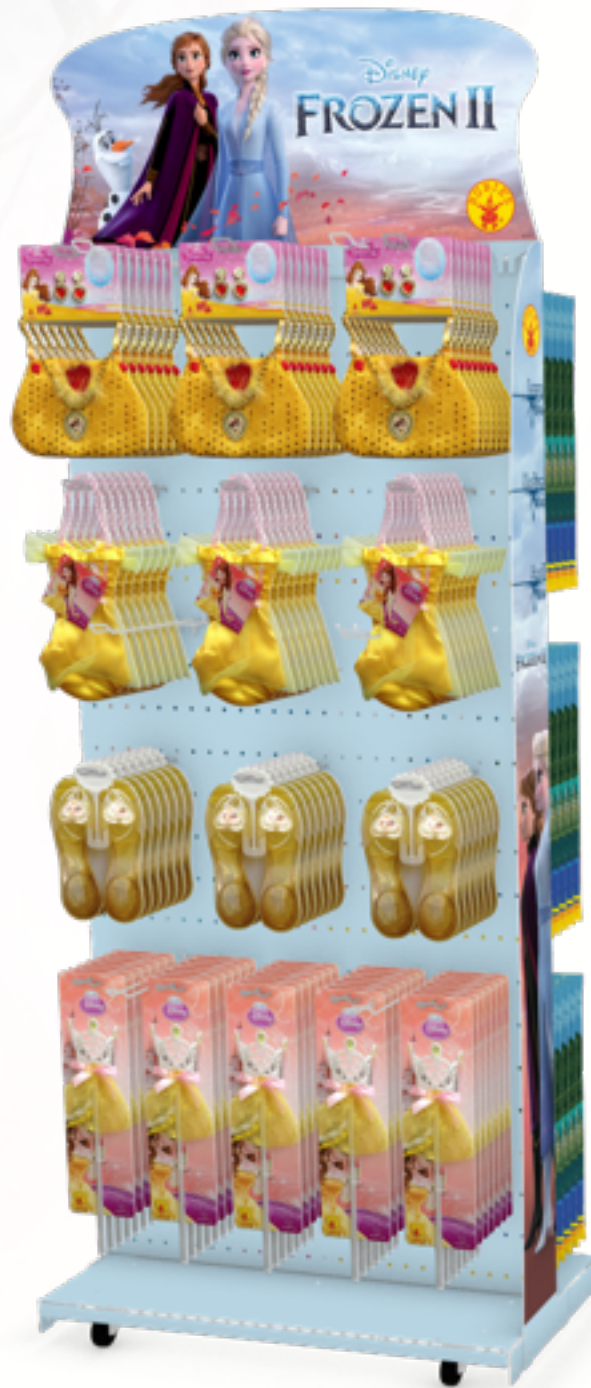
### Assembly:

Flatpacked. Consists of metal body, header, and 12 hooks. Graphic foil on both sides of the header, along with two side panels.

### Dimensions Length-Width-Height, cm:

Full unit: L70 x W40 x H182.  
Approx. 18 kg





# Disney FROZEN II

## L Model - Accessories

This Z model is made specifically for bags and accessories, and includes 12 hooks of 20 cm.

### Configuration:

The Z model has the side panels bent in opposite directions. Header has foil on both front and back. Foil on sides panels.

### Assembly:

Flatpacked. Consists of metal body, header, and 12 hooks. Graphic foil on both sides of the header, along with two side panels.

### Dimensions Length-Width-Height, cm:

Full unit: L70 x W40 x H182. Approx. 18 kg





# Disney FROZEN II T Model Bags

The T model is well suited for bags to be displayed using a small footprint.

## **Solution includes:**

Very simple three piece display with 12 built-in hooks, header, base and foil.

## **Assembly:**

Consists of metal base, body and header. Assembled with screws at the bottom and on the header. Flatpacked.

## **Dimensions Length-Width-Height, cm:**

Full unit: L60 x W37 x H183.  
Approx. 14 kg





# Disney FROZEN II Triangle - Bags

The triangle display offers 9 facings on a small footprint with the possibility to have both girl and boy products on the same stand.

**Solution includes:**

One-sheet metal panel folded into a triangle. The feet are bent a little to add stability. 9 add-on hooks, separate top header and foil.

**Assembly:**

The main display part is folded into a triangle and secured with 3 screws. The header attaches on top. Graphic foil is replaceable for easy re-theming on the header. Flatpacked.

**Dimensions Length-Width-Height, cm:**

Full unit: L70 x W40 x H182.

Approx. 18 kg